

# ANNUAL REVIEW

## ILLUMINATING POTENTIAL

2015/2016



CHILDREN'S  
AID FOUNDATION  
Strength to change lives.

Jemal, formerly youth in care | Front cover: Tamia, formerly youth in care





Through circumstances beyond their control and no fault of their own, children and youth in need of protection lack almost everything that most kids take for granted – like a safe, stable home, someone to nurture their growth, and a sense of unconditional support.

The Children's Aid Foundation is Canada's leading charity, dedicated to supporting children and youth involved in the child welfare system. Since 1979, we have been helping young people achieve their full potential, made possible entirely as a result of the generosity of corporate, foundation, and individual donors. The Foundation works hard to fund programs and initiatives that allow young people to heal, build their confidence, earn an education, develop their identity, and ultimately rise above the often traumatic circumstances from which they've come. We believe that all children have the right to grow, thrive, and lead happy, healthy, and productive lives. Children and youth in care need our help to get there.

Together, we have the strength to change lives.

## Table of contents

2. Letter from the President and CEO
3. Letter from the Chair of the Board
4. National Impact Infographic
6. What is Child Welfare?
10. 2015-2016 Foundation Highlights
11. National Partners
12. Media Highlights
14. National Campaign Update
15. Donor Listings
20. Board of Directors and Foundation Ambassadors
21. Financial Highlights

All young people featured are former youth in care, have received Foundation support, and have voluntarily come forward as youth ambassadors.

# LETTER FROM THE PRESIDENT & CEO



This past year marked an important milestone for the Children's Aid Foundation. Not only did we raise our highest annual revenues to date, but the organization

also took significant steps towards establishing its brand and identity as a nation-wide thought leader within the child welfare community. As President and CEO, I couldn't be more proud of the progress achieved by our hard-working staff, program and agency partners, and, of course, the children and youth recipients of the Foundation's funding. The Children's Aid Foundation now supports young people in nearly every province and territory, and is on track to impact even more young lives throughout the year ahead.

As part of the Foundation's effort to spotlight the issues of young people in care, we hosted our second annual five14 Talks – a forum designed to inspire dialogue around positive change. Bringing together academics, advocates, child welfare workers, members of parliament, philanthropists, and most importantly, young people from care, the event explored challenging topics that encouraged us to think outside the box.

Our five-year National Campaign for Child Welfare is nearing its halfway point with promise. As we move closer to our goal of raising \$60M, we will continue to build momentum through engaging events and celebrating our incredible supporters. This past year, thanks to two transformational donations, we were able to establish two innovative national programs: the Element Financial Youth Capital Program and the HSBC Bank Canada National Transformation Project. The funding provided through these programs will allow us to impact the lives of even more youth in need and continue to encourage their future stability and success.

The unwavering support of our dedicated Board members and senior volunteers has been instrumental in helping us reach this success. The Foundation's outgoing Board Chair, Lynn Factor, with her extensive knowledge and experience in child welfare, has been a vigilant, thoughtful leader, and helped to guide our organization towards ambitious financial goals while ensuring that our funding is being invested in the most effective programs and initiatives. I would like to extend my gratitude to our retiring Board members, Bill Blair, Joe Canavan, Laura Dottori-Attanasio, and Terry Walsh, by acknowledging their incredible leadership and generosity. We are looking forward to welcoming new Board leadership in the coming year.

While our organization continues to evolve and achieve new milestones, we must not lose sight of the often-overlooked young people who remain in desperate need of our support. Many of these children and youth – through no fault of their own – are struggling with the devastating effects of trauma and seemingly unconquerable financial barriers. By providing increased access to educational, enriching, preventative, and healing and recovery opportunities and programs – we can change that. We can, and will, illuminate the potential of Canada's most vulnerable kids. Thank you, on behalf of the Children's Aid Foundation, for giving us the strength to change lives.

A handwritten signature in black ink, appearing to read 'Valerie' followed by a stylized surname.

**Valerie McMurtry, CFRE**  
President & CEO

# LETTER FROM THE CHAIR OF THE BOARD



This past year, the Children's Aid Foundation achieved multiple milestones, which included the expansion of prevention, enrichment, education, and healing and recovery programs. We were also able to connect with high profile corporate donors and encourage corporate community engagement, while also nurturing and developing relationships with local community partners. As our partner relations continue to strengthen, the Foundation will inevitably become an even stronger ally within Canada's child welfare sector, and by doing so, increase accessibility to even more vulnerable children and youth.

Working to support these young people is a cause that will always be close to my heart. With over 35 years of experience as a social worker and advocate for child welfare, my commitment to our nation's abused and neglected young people remains steadfast in strength and ambition. Beyond my work as a member of the Board, I am also a personal donor and volunteer through the Children's Aid Foundation. Too often, these youth – in desperate need of support – are left to fall through the cracks. The traumatic circumstances, from which many have come, can leave lifelong scars and challenges that significantly hinder their future stability. By providing them with access to funding that will not only help them heal and recover, but build their skills and a belief in their own potential, we can truly strengthen their future outcomes.

Although this year marks my last year of tenure as Chair of the Board of Directors, I will remain committed to supporting the Foundation's mission, and look forward to watching it continue to progress. As we move into the 2016-2017 fiscal year, we will continue to call upon the expertise of the Foundation's President and CEO, Valerie McMurtry, along with the knowledge of other invaluable Board members, in navigating the Children's Aid Foundation towards even greater achievements. I'd like to acknowledge and thank our retiring Board members, Bill Blair, MP Scarborough Southwest, Joe Canavan, Laura Dottori-Attansio, and Terry Walsh, for their incredible support and dedication. With the National Campaign for Child Welfare offering a clear focus for fundraising and program-delivery, the Foundation will be proactive in its mission to illuminate the lives of youth in need, and by doing so, helping them become all that they can be.

A handwritten signature in black ink that reads "L. Factor".

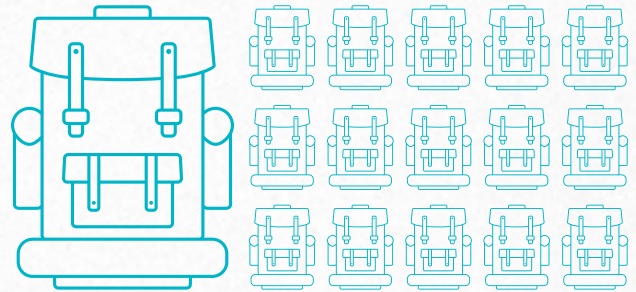
**Lynn Factor, O.Ont, MSW, RSW, LLD**  
Chair of the Board of Directors

# 2015-2016 IMPACT FROM COAST TO COAST

## SELECTED HIGHLIGHTS

REACHED **400** **YOUTH** Through Pape Adolescent Resource Centre (PARC)

A centre that provides individual information, support, and counseling related to community resources, immigration, education, housing, health, sexuality, financial literacy, and employment to youth from care.



**4,030**  
BACKPACKS

Provided for foster care transition and back to school supports.

**(\$20,000 GRANTED)**



Granted \$20,000 to **Baby Love program** to encourage healthy parenting.



**502**  
**930**  
**1,379**

**Graduation awards**

**Stay in School awards**

**Students tutored**

FUNDED **\$11,050**

To support CAS Toronto's **Black Education Awareness Committee**, that runs programs to support Black children and youth in care to build a sense of community, cultural identity, and awareness of their heritage.

**\$2.5M**

**The Element Financial Youth Capital Program** was established; a \$2.5 million initiative that supports vulnerable youth by providing education and employment training and skills.



**TOTAL \$ RAISED:**  **\$8,571,550**

**FOUNDATION  
EVENT  
ATTENDEES:**



**2,437**

**NUMBER OF YOUNG  
PEOPLE REACHED:**



**23,603**

**TOTAL NUMBER OF DONORS:**



**3,908**

**Since  
1979**

The Children's Aid Foundation  
has been helping young people  
achieve their full potential.

**4,097**

YOUNG PEOPLE  
REACHED THROUGH  
**EDUCATION  
FUNDING**

Including scholarships,  
bursaries, wraparound  
supports, financial  
literacy, tutoring,  
and mentoring.



On track to reach youth in every  
province and territory in Canada.



**7,671**

YOUNG PEOPLE REACHED THROUGH

**HEALING AND  
RECOVERY  
PROGRAMS**

including transitioning to independence,  
physical and mental health support  
not covered by government funding,  
and permanency and adoption.



**2,575**

YOUNG PEOPLE REACHED THROUGH

**PREVENTION  
PROGRAMS**

including family support, attachment  
parenting, family counseling services,  
and community parent leaders.



**9,199**

YOUNG PEOPLE REACHED THROUGH

**ENRICHMENT  
PROGRAMS**

including cultural events and classes,  
arts classes, sports, and camp.

# CHILD WELFARE LANDSCAPE

## WHAT IS CHILD WELFARE?

There are approximately **67,000 children** and youth in Canada under the care of the child welfare system – living in foster care, kinship care (living with extended family), group homes or treatment facilities.<sup>1</sup>

Children come into care for various reasons – they may have experienced or are threatened with abuse or neglect, or their parents may not be able to safely care for them. In Canada, there is a system of child welfare organizations established by provincial and territorial governments to ensure the safety and well-being of children and youth.<sup>2</sup> These organizations provide services that supplement or substitute for parental care or supervision.



Over **235,000** children are at risk of abuse and neglect in Canada.<sup>3</sup>



There are **30,000** children and youth eligible for adoption within Canada's child welfare system. Despite this, only about **2,000** are adopted each year.<sup>4</sup>



# ABOUT THE FOUNDATION

- » Canada's leading charity with the capacity to strategically raise funds in order to fund and deliver high impact programs and services for uniquely vulnerable kids all across our country
- » Bridge the gap between government support and what young people need to heal and become healthy, successful adults
- » Help children and youth in care overcome the obstacles that hold them back by providing ongoing support to those who need it most
- » Bring together leaders in the child welfare sector to convene round tables on pressing issues like youth leaving care and permanency
- » We are not involved in the protection, investigation or apprehension of children and youth
- » We work closely with former youth in care and funding recipients, we are not directed connected to foster and/or group homes or guardians

## 5 AREAS OF GREATEST NEED



HEALTH &  
WELL-BEING



EDUCATION



CRISIS &  
PERMANENCE  
SOLUTIONS



IDENTITY,  
EQUITY &  
INCLUSION



YOUTH IN  
TRANSITION

Access to education, safe and stable housing, nurturing relationships, life skills, a sense of identity, and emotional healing, are all determining factors in predicting the success of a young person after transitioning out of care.<sup>5</sup> The Children's Aid Foundation targets funding towards these areas to help youth involved with child welfare overcome barriers and build a belief in their own abilities.

<sup>1</sup> Mulcahy, M. & Trocme, N. (2010). Centres of Excellence for Children's Well Being. Children and Youth in Out-of-Home Care in Canada.

<sup>2</sup> Child Welfare League of Canada. (2003). Children in Care in Canada: A summary of current issues and trends with recommendations for future research.

<sup>3</sup> Public Health Agency of Canada. (2008). Canadian Incidence Study of Reported Child Abuse and Neglect.

<sup>4</sup> The Adoption Council of Canada. (2010). Family Bonds: How the Government of Canada Can Support Adoption.

<sup>5</sup> Reid, C. & Dudding, P. (2006). Centre of Excellence for Child Welfare. Building a Future Together: Issues and Outcomes for Transition-Aged Youth.



## Our priorities

Programs that change lives



### HEALTH & WELL-BEING

Children under the protection of child welfare face complex health challenges that go beyond basic healthcare and what governments can support. In fact, 82% of children and youth in care have been diagnosed with special needs.<sup>6</sup> These can include physical, cognitive, emotional, behavioural, and social problems. For kids involved with child welfare, sports, arts and other enrichment activities are often sidelined. Economic pressures mean that these children do not enjoy the same extra-curricular activities that most of us enjoyed while growing up. Health & Well-being is an area of great need as we want the children and youth we are dedicated to serve to have the mental and physical health supports required to heal, thrive, and move forward with strength and resilience.

Funded by the CIBC Children's Foundation, the CIBC Miracle Fund provides enrichment opportunities and supports for children and youth served by partner agencies to enhance their physical, mental, social and developmental well-being. In 2015, the CIBC Miracle Fund supported 557 children and youth through 11 partner agencies. Child welfare research has highlighted that youth need opportunities in multiple areas of their lives, including athletics, the arts, and relationships to help them thrive. Participation in community-based or other extra-curricular activities can be a protective factor for youth, help them build relationships, and is an indicator of well-being.<sup>7</sup>



### EDUCATION

Young people in and from care are extremely academically vulnerable, and a high percentage experience poor educational outcomes. These poor outcomes arise from various factors that can include a child's history of trauma, abuse, neglect, an unstable residence, and moves that may occur once a child enters foster care.<sup>8</sup> For many young people who have faced disadvantages in life, such as living in foster care or having serious mental health issues, enrolling in a satisfying post-secondary education program could be a major turning point in their lives. Education can increase their sense of autonomy, community integration, productivity, and quality of life.<sup>9</sup>

- » 46% of Ontario's Crown Wards and former Crown Wards earned their high school diplomas compared with 83% of their peers from permanent families.<sup>10</sup>

*"Thanks to [HSBC Bank Canada's] support I can pay for my paralegal licensing fees, begin studying for my upcoming exam, and I'll be able to begin representing clients by the end of the year."* – Arthur, HSBC Bank Canada National Transformation Project Recipient

<sup>6</sup> Ontario Association of Children's Aid Societies. (2011). Children's Well Being: The Ontarian Perspective. Child Welfare Report.

<sup>7</sup> Reid, C. & Dudding, P. (2006). Centre of Excellence for Child Welfare. Building a Future Together: Issues and Outcomes for Transition-Aged Youth.

<sup>8</sup> Leone, P., & Weinberg, L. (2012). Center for Juvenile Justice Reform. Addressing the Unmet Educational Needs of Children and Youth in the Juvenile Justice and Child Welfare Systems.



## CRISIS & PERMANENCE SOLUTIONS

Every child has the right to a safe and happy home. Yet, across Canada, more than 30,000 children await permanent homes. As few as five per cent find a home each year.<sup>11</sup> Unfortunately, many more children are at risk of being removed from their homes and coming into care due to abuse, neglect, and abandonment.

The best way to reduce a crisis is to prevent children and youth from coming into care in the first place by strengthening families and communities - improving outcomes for everyone.

**The Thorncliffe Collaborative for Muslim Families and Children** is an innovative pilot initiative funded by the Children's Aid Foundation and run by the Children's Aid Society of Toronto's Community Development and Prevention Program. Thorncliffe is small geographic area but is highly dense with many families and children. Children's Aid Society of Toronto receives many referrals from this neighbourhood and the aim of the Collaborative was to improve services and outcomes for Muslim families and children. Working with community leaders, resources about child welfare supports were developed and community meetings were held. The Collaborative has increased the capacity of the community's non-profit organizations and has increased skills among parents to positively interact with and care for their children.

*"A parent stopped Munira and I outside on one of the coldest days this year to have a chat about parenting her son. She had attended one of the workshops and was eager for even more information and connections."*  
– Parent Outreach Facilitator



## IDENTITY, INCLUSION & EQUITY

Many children and youth involved with child welfare have to contend with the trauma of neglect, abandonment and abuse while trying to determine who they are and how they fit into society. Confusion, isolation, and shame become the recurring themes for these kids who are living in a world that does not always understand, support or accept them. Growing up can be even more confusing for children and youth who identify as Aboriginal, Black, or from the LGBTQ community, or for newcomers to Canada.

The Children's Aid Foundation is committed to changing the lives of these extremely vulnerable groups of children and youth who are often over-represented in child welfare. The Foundation is focusing efforts on supporting their unique needs while helping them to explore and celebrate their identity.

**Beautiful Hair, Beautiful Me** is a volunteer-run Black Hair and Skin Care Salon for Black children and youth in care at CAS Toronto. The program provides free hair care services, education on hair products, tools and techniques to maintain healthy hair and skin in an environment that focusses on building self-esteem and self-worth. The salon celebrates the beauty of all hair textures and skin colours.

*"When 'Sasha' first came to the salon as a young 13 year old girl her attitude about her hair was negative. She would make comments such as 'I hate my hair', 'I wish I were white', and 'I'm ugly'. After attending the salon on a regular basis and after receiving support from staff, Sasha can now say she 'loves' her hair and can 'appreciate what her kink can do'".* – Youth Worker



## YOUTH IN TRANSITION

When youth in care "age out", they are abruptly cut-off from a system that has provided them with support and adult connections. This transitional period is often very challenging, as youth begin to navigate living alone, but without many resources. Young people leaving care need support accessing housing, education, and employment, with the support of nurturing relationships.

- » A Canadian study found that 68% of youth who are homeless had previously been in foster care, group home placements, or in youth centres. 43% had been involved with child protection services.<sup>12</sup>

**The Home Base Fund** supports the housing needs of youth who have left care. Funds can be used to support first and/or last month's rent, emergency funds to assist youth when they come up short on their rent or utility bills, moving fees, emergency storage for belongings until housing can be secured, and furniture bank fees.

<sup>9</sup> Geenen, S., Powers, L.E., Phillips, L.A., Nelson, M., McKenna, J., Wignes-Yanez, N., Blanchette, L., Croskey, A., Dalton, L.D., Salazar, A., & Swank, P. (2015). Better futures: a randomized field test of a model for supporting young people in foster care with mental health challenges to participate in higher education. *Journal of Behavioural Health Services & Research*, 42, 150-71.

<sup>10</sup> Ontario Association of Children's Aid Societies. (2014). *Gateway to Success Cycle Three: OACAS Survey of the Educational Attainment of Crown Wards and Former Crown Wards, Aged 16 through 20 During the 2012-2013 Academic Year*.

<sup>11</sup> The Adoption Council of Canada. (2010). *Family Bonds: How the Government of Canada Can Support Adoption*.

<sup>12</sup> Raising the Roof. (2009). *Youth Homelessness in Canada: The Road to Solutions*.



# HIGHLIGHTS FROM 2015-2016



## FIVE14 TALKS MAY 2015

Hosted by Seamus O'Regan and featuring five inspiring speakers and one panel, the forum inspired approximately 150 guests to think big and join the conversation about positive change within child welfare.



## 15<sup>TH</sup> ANNUAL WOMEN'S GOLF CLASSIC JUNE 2015

15th annual Women's Golf Classic raises over \$266,000.



"The mission of the StarFish Foundation is to 'make a difference – one person at a time.' It is unlikely we can change the world but we believe that our partnership with CAF has allowed us to positively impact the lives of a group of young people, one at a time; one of whom may just change the world!"

StarFish Foundation  
Post-Secondary Education Supporter



## \$3.75M IN HONOUR OF TED AND LORETTA ROGERS

**AUGUST 2015**  
The Program provides Comfort Kits for Canadian children entering foster care.



## LINDT RAISES OVER \$245,000

**NOVEMBER 2015**  
Lindt & Sprungli Canada Inc. celebrated 20 years in Canada with a Black-Tie Gala, featuring special guest Chantal Kreviazuk. All proceeds from the event supported the Children's Aid Foundation with over \$245k raised!



"When we lost our husband and father Dr. Paul D. Steinhauer in 2000, we wanted to create a meaningful legacy to commemorate his extraordinary contribution to the field of children's mental health in child welfare. We chose to establish an endowment fund with the Children's Aid Foundation, the Dr. Paul D. Steinhauer Memorial Scholarship Fund, of which we know will forever reach our country's most vulnerable kids, helping them to build brighter futures through access to post-secondary education year after year. Since 2000, we have been thrilled to have seen this fund support more than 90 young people. We know our husband and father Dr. Steinhauer would be pleased to have provided the same opportunities his own children have had in their lives."

Nancy and Estelle Steinhauer  
Endowment Donor



## 29<sup>TH</sup> ANNUAL CAF GALA, TEDDY BEAR AFFAIR RAISES OVER \$1.4M NOVEMBER 2015

784 guests joined honorary co-chairs Andrea Weissman-Daniels and Mark Daniels for an incredible night. Thanks to patron sponsors CGI and CIBC.



## NEWZAPALOOZA RAISES \$50K

**NOVEMBER 2015**  
Newzapalooza – annual battle of the media bands raises a record breaking \$50,000 for the Children's Aid Foundation.



"Arup is a company that feels a sense of responsibility to support our communities; to help kids in care become independent and empowered. By bringing the Arup team together in support of the work of the Children's Aid Foundation, we are helping to change the lives of youth and focusing on what can be accomplished when building on the resiliency of kids."

Arup  
Workplace Giving Donor



## \$1M DONATION

**DECEMBER 2015**  
CIBC Children's Foundation donates \$1M to CAF's National Campaign for Child Welfare which will allow 2,500 vulnerable youth access to sports, educational, recreational, and cultural opportunities.



"At Element Financial, we have offices across North America, and wherever possible, we try to find opportunities to give back to the communities in which we work. We believe very strongly in finding ways to nurture the entrepreneurial spirit, and by creating the Element Financial Youth Capital Program, we know we are building the next generation of Canada's business leaders to help lead Canada's economy forward."

John Sadler  
Element Financial, Corporate Donor



## YOUNG PEOPLE IN PROFILE DEBUTS

**FEBRUARY 2016**  
As champions of young people's voices, we collaborated with 10 youth to share their lived experiences through a digital series that informs our work and mission.



"I am extremely privileged to be working as an administrative volunteer with so many people whose focus is on improving the lives of children and youth. I am honoured to assist the staff in supporting our mandate to service some of our most vulnerable citizens throughout the course of their development. I hope my volunteering will touch some lives in a positive way as it has brought great personal pleasure to me."

Frances Forrester  
Foundation Volunteer

# NATIONAL PARTNERS

Partner Organizations	City	Province	★ Mission Delivery Partner	▲ Collaborative Partners	Other
Adopt4Life	Toronto	ON		x	
Adoption Council of Canada	Ottawa	ON		x	
Adoption Council of Ontario	Toronto	ON		x	
Batshaw Youth and Family Centres	Montreal	QC	x		
Big Brothers Big Sisters of Toronto	Toronto	ON		x	
Boost Child and Youth Advocacy Centre	Toronto	ON	x		
Bruce Grey Child & Family Services	Owen Sound	ON	x		
Catholic Children's Aid Society of Toronto	Toronto	ON	x	x	
Catholic Social Services	Edmonton	AB	x		
Centres Jeunesse de l'Outaouais	Gatineau	QC	x		
Child Welfare League of Canada	Ottawa	ON			M
Children's Aid Foundation of Ottawa	Ottawa	ON	x		
Children's Aid Society of London & Middlesex	London	ON	x		
Children's Aid Society of the Districts of Sudbury and Manitoulin	Sudbury	ON	x		
Children's Aid Society of Toronto (FOUNDING PARTNER)	Toronto	ON	x	x	I
The Children's Aid Foundation of York Region	Vaughan	ON	x		F
Choices for Youth	St. John's	NL	x		F
Corsage Project	Toronto	ON	x		
COSTI Immigrant Services	Toronto	ON	x		
Covenant House Toronto	Toronto	ON	x	x	
Dave Thomas Foundation for Adoption	Columbus	OH		x	
Department of Family Services Government of Nunavut	Iqaluit	NU	x		
Durham Children's Aid Foundation	Ajax	ON	x		
Family and Children's Services of Guelph and Wellington	Guelph	ON		x	
Family and Children's Services of the Waterloo Region	Kitchener	ON	x		
Fondation du Centre Jeunesse de Montreal	Montreal	QC	x		
Foster Family Coalition of the Northwest Territories	Yellowknife	NT	x		
General Child & Family Services Authority	Winnipeg	MB	x		
Halifax District Office-Child Welfare	Halifax	NS	x		
Halifax Region Children's Aid Foundation	Halifax	NS	x		
Halton Children's Aid Society	Burlington	ON	x		
Hull Services	Carlrgary	AB	x		
Indigenous Perspectives Society	Victoria	BC	x		
Jewish Family and Child Service of Toronto	Toronto	ON	x	x	
JVS Toronto	Toronto	ON	x		
Kawartha-Haliburton Children's Foundation	Peterborough	ON	x		
KW Counselling Services	Kitchener	ON	x		F
La Ronge Indian Child and Family Services	La Ronge	SK	x		
Langley Community Services Society	Langley	BC	x		
Metis Child, Family & Community Services	Winnipeg	MB	x		
Michif Child & Family Services	The Pas	MB	x		
Ministry of Children & Youth Services	Toronto	ON		x	
Youth in Care Canada	Ottawa	ON		x	M
Native Child and Family Services of Toronto	Toronto	ON	x	x	M
North American Council on Adoptable Children (NACAC)	St. Paul	MN			
North Okanagan Youth and Family Services Society	Vernon	BC	x		
Office of the Provincial Advocate for Children and Youth	Toronto	ON	x	x	
Ontario Association of Children's Aid Societies	Toronto	ON	x	x	
Pacific Community Resource Society	Vancouver	BC	x		
Pape Adolescent Resource Centre	Toronto	ON	x		
Partners for Youth	Fredericton	NB	x		
Peel Children's Aid Foundation	Mississauga	ON	x		
PEI Child & Family Services	Charlottetown	PEI	x		
Penticton & District Community Resources Society	Penticton	BC	x		
Prosper Canada	Toronto	ON	x		
Ranch Ehrlo Society	Pilot Butte	SK	x		
Regina Open Door Society	Regina	SK	x		
Richmond Youth Services Agency	Richmond	BC	x		
Rosalie Hall	Toronto	ON	x		I
Tridel's Building Opportunities for Life Today	Toronto	ON		x	
Windsor-Essex Children's Aid Society	Windsor	ON	x		
Women's Multicultural Resource and Counselling Center of Durham	Pickering	ON	x		
Woods Homes	Calgary	AB	x		

## PARTNERSHIPS

Partnerships are integral to the work of the Children's Aid Foundation. We recognize that there are limitations and gaps within the current child welfare system and we believe strongly that we all have a role to play in improving outcomes for children. We believe that the opportunity for us to see significant improvements and achieve greater impact for children and youth in care dramatically increases when we work together. Our national network of partners ensure that donor dollars are effectively used to help the most vulnerable young people in communities across the country.

Our largest and founding partner is the Children's Aid Society of Toronto. While the number of partners we work with has increased over time, we remain committed to supporting the children and youth served by the Children's Aid Society of Toronto.

This year, the Children's Aid Foundation worked in partnership with 63 child welfare and child and youth serving partners in a variety of different ways.

- .....
- ★ – Receive grants to help children and youth
  - ▲ – Help keep CAF informed about child welfare issues
- .....

F = Fundraising Capacity Building  
I = Investment Manager  
M = Membership

# 2015-2016 MEDIA HIGHLIGHTS



## five14 Talks

CBC Radio's **Metro Morning** show highlights the Children's Aid Foundation's five14 Talks, honouring Ontario's Children and Youth in Care Day, with an interview from Foundation Ambassador, Kristy.



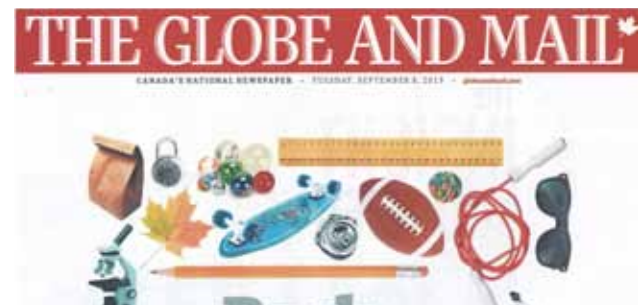
## JOE CARTER CLASSIC

Long-standing community event partner, the Joe Carter Classic, and the Joe Carter Scholarship Fund recipients, featured in the **Toronto Star**.



## COMFORT KITS

**CityNews** and **CBC TV** cover stories on the 3500, Comfort Kits that have been distributed this year thanks to the Ted and Loretta Rogers Foster Care Transition Program.



## RECOGNITION NIGHT

The Children's Aid Foundation's post-secondary education scholarship program is featured in **The Globe and Mail**, and coverage of the Foundation's Recognition Night appears on **CBC Radio's Metro Morning** show and **Cityline**.



## CHILDREN'S AID FOUNDATION GALA

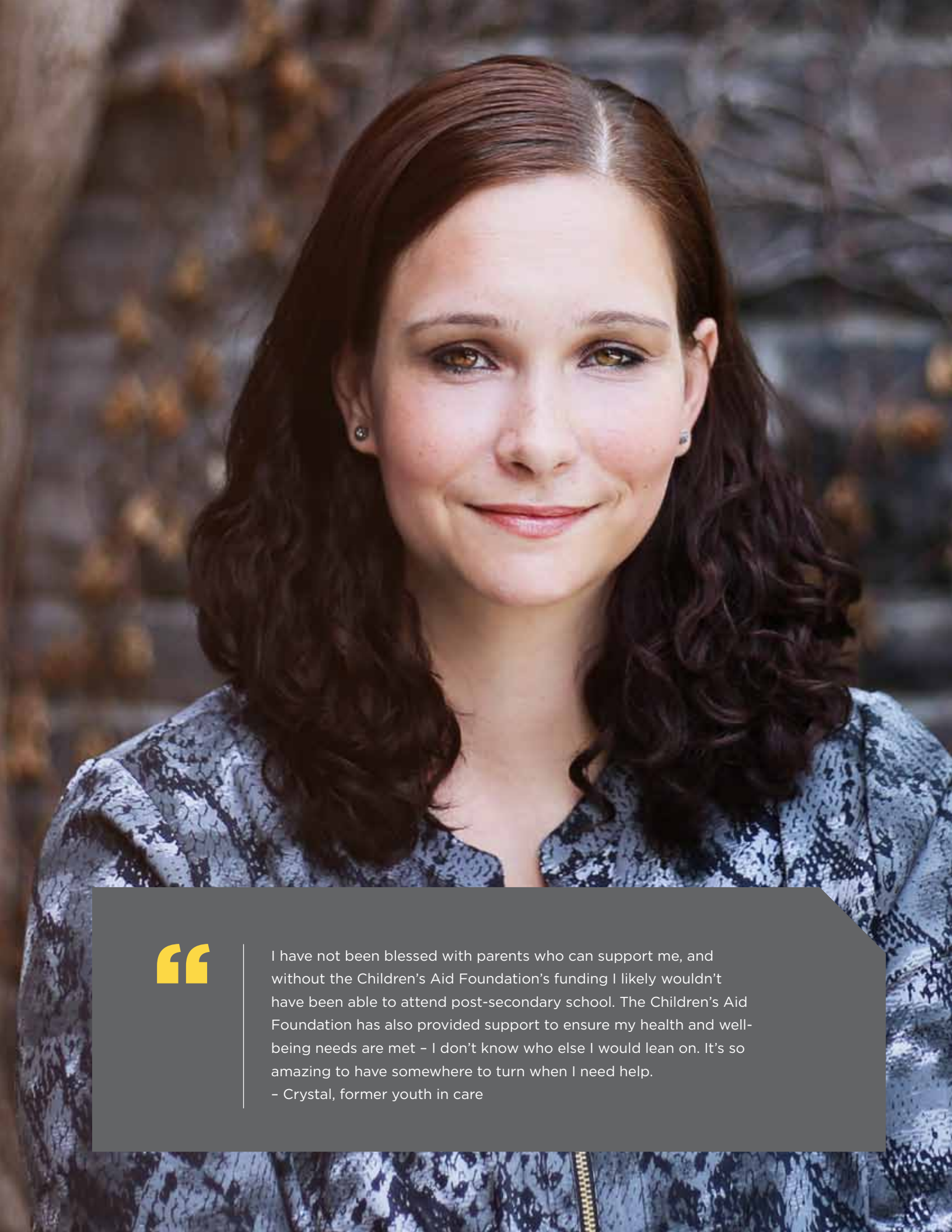
The annual Children's Aid Foundation Gala, Teddy Bear Affair is featured in **Toronto Life**, **Hello! Canada**, **CTV Toronto**, and **Cityline**.



## WESTERN CANADA COVERAGE

Donations benefitting Western Canada, profiling contributions from HSBC Bank Canada and the Slaight Family Foundation, appears in the **Vancouver Sun**, **News 1130 Radio**, and **News Talk 770 Calgary**.



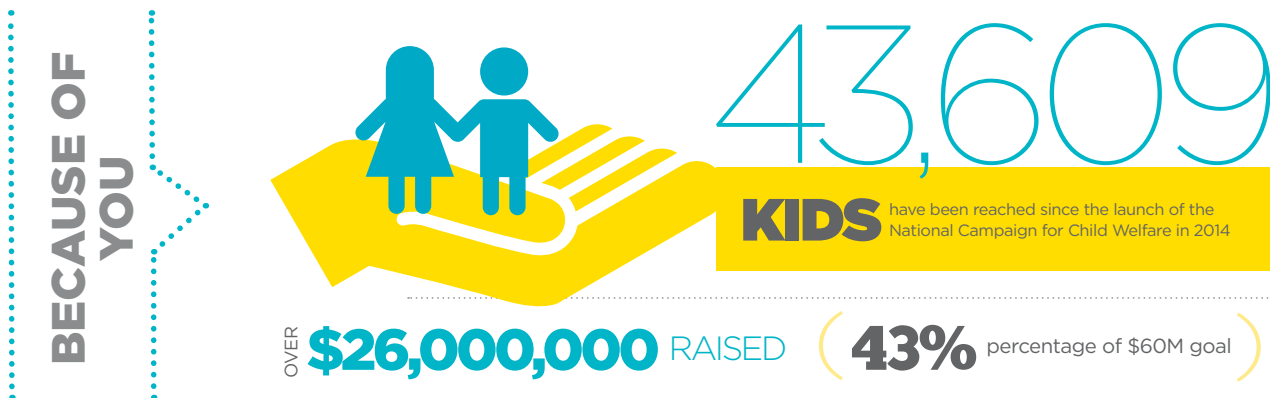


“

I have not been blessed with parents who can support me, and without the Children's Aid Foundation's funding I likely wouldn't have been able to attend post-secondary school. The Children's Aid Foundation has also provided support to ensure my health and well-being needs are met - I don't know who else I would lean on. It's so amazing to have somewhere to turn when I need help.

- Crystal, former youth in care

# NATIONAL CAMPAIGN FOR CHILD WELFARE



A little over two years ago, the Children's Aid Foundation set itself an ambitious goal of raising \$60M for the National Campaign for Child Welfare.

By the end of the 2015-2016 year, 24 months into our campaign, we had raised **43% of the total campaign goal**. We are on track to move even closer towards our goal during the next fiscal year.

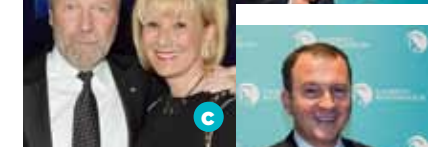
## CAMPAIGN HIGHLIGHTS



- A. \$3.75 MILLION**  
**TED & LORETTA ROGERS FOSTER CARE TRANSITION PROGRAM**  
 Provides over 3,500 Comfort Kits for Canadian children entering foster care, offering a sense of security during one of the most traumatic times in their lives.



- B. \$2.5 MILLION**  
**THE ELEMENT FINANCIAL YOUTH CAPITAL PROGRAM**  
 Helps vulnerable youth build a stable foundation by supporting high school completion, financial literacy, employment skills, internships, mentoring and entrepreneurship, with over 85 students already receiving support after the program's recent launch.



- C. \$1 MILLION**  
**THE SLAIGHT FAMILY FOUNDATION RIGHT AT HOME PROGRAM**  
 Will help over 860 vulnerable youth across Canada find safe, secure and affordable housing over the next four years.



- D. \$1 MILLION**  
**CIBC CHILDREN'S FOUNDATION**  
 Increasing access for 2,500 new children across Canada to CIBC's Miracle Fund, a Fund dedicated to making enrichment activities a reality for vulnerable children.



- E. 3,000 STUDENTS WILL BE REACHED**  
**HSBC BANK CANADA NATIONAL TRANSFORMATION PROJECT**  
 Funds grants for students involved in the child welfare system by providing the money needed to cover non-traditional education costs such as entrance exam fees, specialized career courses, tutoring and much more.

(A) Martha Rogers and Loretta Rogers  
 (B) Steven Hudson, Chairman & CEO, Element Financial  
 (C) Gary Slight and Donna Slight, The Slight Family Foundation  
 (D) Christian Exshaw, Managing Director and Head, Global Markets, CIBC Capital Markets  
 (E) Jason Henderson, Executive Vice President, Head of Global Banking & Markets, HSBC Bank Canada

# CELEBRATING OUR CAMPAIGN DONORS

The Children's Aid Foundation is extremely grateful to the following supporters of the National Campaign for Child Welfare for making a significant commitment to vulnerable children and youth across Canada.

*This list represents commitments of \$25,000 or more made after the launch of our National Campaign for Child Welfare (May 1, 2014 – March 31, 2016).*

## **\$3 Million**

In Honour of Ted & Loretta Rogers

## **\$2 Million**

Element Financial  
Anonymous

## **\$1 Million**

CIBC Children's Foundation  
The Slight Family Foundation  
TD Bank Group

## **\$500,000 - \$999,999**

BMO Financial Group\*  
Michael "Pinball" Clemons Foundation  
Susanne Holland  
La fondation de la famille  
J.W. McConnell  
Scotiabank Group\*

## **\$250,000 - \$499,999**

The Mark Daniels and  
Andrea Weissman-Daniels  
Charitable Foundation  
Dottori-Attanasio Family\*  
Estate of Sandra Margaret  
Reid Alter Ego Trust  
David and Susan Howard  
Lindt & Sprüngli (Canada), Inc.  
Scotiabank Global Banking  
and Markets\*

## **\$100,000 - \$249,999**

David and Debbi Arnold  
Citi Canada\*  
Andrew W. and Christine Dunn\*

Christian and Florence Exshaw  
John R. Finlay  
John A. Francis and Susan Caskey  
Fluid Events & Consulting  
Brian Gluckstein and Gary  
Sarantopoulos  
Gryphon Investment  
Counsel Incorporated  
Donald Guloien and Irene Boychuk\*  
Barry and Alison Hildred  
Hoffmann-La Roche Limited  
(Roche Canada)  
Fred and Donna Leslie\*  
Ovens Family  
RBC Foundation\*  
Terry and Lila Walsh\*

## **\$50,000 - \$99,999**

The B.O.L.T. Charitable Foundation  
The Harold E. Ballard Foundation  
Chum Charitable Foundation\*  
Anca Drexler and Saurabh Rastogi  
Estate of Clarris Emma Wilson  
Estate of Gertrude Helperin  
Google Canada  
The W. Garfield Weston Foundation  
Home Trust Company  
The Catherine and Maxwell  
Meighen Foundation  
TELUS

## **\$25,000 - \$49,999**

Anonymous\*  
Altus Group Limited  
Arup Canada Inc.  
Deborah Barrett and Jim Leech  
The Bay Street Children's  
Foundation\*  
Janet Beadle  
Brent and Lynn Belzberg  
Sheryl and Eric Berke  
Larry M. Berman and Debrah Berman  
Blake, Cassels & Graydon LLP\*  
Sheila R. Block\*  
Andrea Bolger and John Green  
BOMA Toronto (Building Owners  
& Managers Association)\*  
Borden Ladner Gervais LLP\*  
Elizabeth and John Breen  
The Canavan Family Foundation\*

Daniels Capital Group  
Ericsson Canada Inc.\*  
Estate of Audrey Massey  
Estate of Edna Marguerite Redman  
EY  
Genworth Financial Canada\*  
Andrew & Leslie Hoffman  
KRG Children's Charitable  
Foundation\*  
Laidlaw Foundation  
Jonathan Lansky and  
Marifel Pantojan  
The LeGresley Family Foundation  
Manulife\*  
John and Roseanne Marsh  
Shannon McGinnis  
John J. and M. L. Meehan  
David Morton and Doriana  
Zohil-Morton  
P & L Odette Charitable  
Foundation  
John R. and Maire Percy  
Gordon and Cathryn Raman  
John and Amanda Sherrington\*  
Sprott Asset Management\*  
Marc St-Onge and Kellie Saunders  
The StarFish Foundation  
Toronto Star Fresh Air Fund\*  
Donna E. Toth & Family  
Anonymous  
Zurich Canada\*

## **Special Campaign Contributors**

Air Canada Foundation  
AMJ Campbell  
Anonymous  
Bell Media Radio Sales  
Groupe Dynamite Inc.  
HSBC Bank Canada  
Sandbox Advertising Inc.  
Slight Communications Inc.  
St. Joseph's Communications\*

\*Foundation supporters 10+ years.



# ILLUMINATION CIRCLE

At the Children's Aid Foundation, "illumination" is an exceptionally important concept. By "illuminating" our children and youth, we are shining a light on their challenges and experiences and celebrating their resilience, empowerment and potential. Launched in 2016, the Illumination Circle is a group of dedicated supporters who strongly believe in illuminating the potential of children living in the child welfare system across Canada through their investment in the Children's Aid Foundation. *This list represents donors who have made an annual gift between \$5,000 and \$25,000 during the period of May 1, 2015 - March 31, 2016.*

## \$10,000 - \$24,999

Janet Beadle  
BMW Group Financial Services Canada\*  
BOMA Toronto (Building Owners & Managers Association)\*  
The Canavan Family Foundation\*  
CI Financial  
CIT Canada  
Paul M. and Susan Clark  
Crowe Soberman LLP  
Ian de Verteuil and Linda Glover  
Richard and Darleen Falconer  
Charyl and Patrick Galpin  
Genworth Financial Canada\*  
Google Canada  
Jays Care Foundation  
Diane A. Kazarian and Ross Sinclair  
KBSH Spirit Foundation  
The M.E.H. Foundation  
John and Roseanne Marsh  
Shannon McGinnis  
John J. and M. L. Meehan\*  
Sheila A. Murray  
Kathleen O'Keefe and Mark Hilson  
John R. and Maire Percy  
Stephen L. and Cookie Sandler\*  
TELUS\*  
Karl and Kim Wildi

## \$5,000 - \$9,999

Anonymous  
Altus Group Limited  
Sylvia Baumann and Glenn Shyba  
Geoffrey S. Belsher  
Sam Bennett  
Beutel Goodman Private Client Group\*  
David and Molly Bloom  
Daniela Borissova  
Elizabeth Breen  
Bevis and Susan Bullock  
Bill Butt and Susan Quigley  
The Corsage Project\*  
Edward and Daphne Dodig  
Maureen and Victor Dodig and Family  
Roman and Roma Dubczak  
The Economical Insurance Group  
Amoryn Engel and Kevin Schindel  
EY  
John Friedrichsen and Tracy Cooper  
La Fondation Emmanuelle Gattuso  
Steve and Marianne Geist\*  
Greenwin Inc.  
David and Kimberly Hanmer\*  
John and Eva Henderson  
Jarden Consumer Solutions  
Community Fund Canada, Inc.  
James C. Johnson  
Sheilagh and Peter Johnson\*  
Steve Keilhauer\*  
The Kemp Family  
Kinross Gold Corporation and its Employees  
Greg Latremaille  
David Leith and Jacqueline Spayne\*  
Barbara and Dougal Macdonald  
The Honourable Margaret Norrie McCain  
Eric and Rita Métivier  
Chris and Noella Milne\*  
Greg Mills and Lynn Richardson  
Richard Nesbitt and Lucy Lawlor  
Office Coffee Solutions  
Eric and Estelle Ohayon  
Jenny E. Poulos and Nick Lafazanis  
Satish Rai  
Jan and Stephen Sampson

Shum Vourkoutiotis Fund at the  
Toronto Community Foundation  
Soroc Technology Canada Inc.  
Wayne Squibb  
Sunwing Canada Inc.  
James A. and Brenda Sutherland  
Unilock Group of Companies\*  
The Geoffrey H. Wood Foundation

\*Foundation supporters 10+ years.



Cassandra, former youth in care

# SIGNATURE EVENT SUPPORTERS

The Children's Aid Foundation is very thankful to all of our 2015-2016 signature event sponsors. Our sponsors' commitment has helped to support many children and youth across Canada who have faced tremendous adversity in their young lives by making access to a variety of urgent supports possible. *This list represents sponsors at Women's Golf Classic, Suitcase Party, Holiday Season Celebration, and Children's Aid Foundation Gala – Teddy Bear Affair, who made a gift \$5,000 or more between May 1, 2015 and March 31, 2016.*

## **\$100,000+**

CIBC Children's Foundation

## **\$50,000 - \$99,999**

CGI\*

The Mark Daniels and  
Andrea Weissman-Daniels  
Charitable Foundation

Gryphon\*  
TD Bank Group\*

## **\$25,000 - \$49,999**

BMO Financial Group\*  
Citi Canada\*  
Element Financial  
Scotiabank Group\*  
The Slight Family Foundation

## **\$10,000 - \$24,999**

Altus Group  
Aon Hewitt  
Avison Young Real Estate  
Management Services\*  
Bell Canada\*  
Blake, Cassels & Graydon LLP\*  
BMW Financial Services Canada\*  
Borden Ladner Gervais LLP\*  
Canadian Shield Capital  
CI Financial  
Daniels Capital Group

Davis & Henderson,  
Limited Partnership  
Dundee Corporation  
David and Shelagh Durno  
Eagle Professional Resources\*  
EY  
Hatch  
Heathwood Homes  
Home Trust Company  
The Sheldon Inwentash and Lynn  
Factor Charitable Foundation\*  
Manulife\*  
National Bank of Canada\*  
NATIONAL Equicom  
Norbord Inc.  
The O'Connor Family\*  
SunGard Financial Systems  
TELUS\*  
Torys LLP\*  
Wronski-Cann Group,  
Richardson GMP

## **\$5,000 - \$9,999**

Agency by Alloway  
Larry M. Berman and Debrah Berman  
The Canavan Family Foundation\*  
Deloitte  
Dome Productions\*  
Dream Unlimited Corp.  
First Asset Funds Inc.  
Gowling Lafleur Henderson LLP  
Barry and Alison Hildred  
Investors Group  
Dr. Lisa Kellet, DLK on Avenue Inc.  
KingSett Capital  
Barbara and Dougal Macdonald  
McKinsey & Company  
Mergelas Family  
Monte Design  
Morneau Shepell\*  
PricewaterhouseCoopers LLP\*  
RSA Insurance  
Scotiabank Global Banking  
and Markets  
Stikeman Elliott LLP  
Sunwing Canada Inc.

\*Foundation supporters 10+ years.



Honorary Co-Chairs Mark Daniels & Andrea Weissman-Daniels with their daughter Cassidy at CAF Gala 2015



Jemmy, Yuan, and Cheyanne, former young people in care at Recognition Night 2015



Golfers at Women's Golf Classic 2015



# GIFT IN-KIND AND MEDIA PARTNERS

The Children's Aid Foundation is grateful to our donors who provide in-kind or media support for a variety of Foundation programs.

*This list represents donors who have made an in-kind gift or provided media support between May 1, 2015 and March 31, 2016.*

## \$100,000+

Air Canada Foundation  
Bell Media Radio Sales  
Groupe Dynamite Inc.  
Sandbox Advertising Inc.  
Slight Communications Inc.

## \$50,000 - \$99,999

Fairmont Royal York\*  
Anonymous

Charles Pachter  
St. Joseph Communications\*  
Tiffany & Co

## \$25,000 - \$49,999

Air Canada  
AMJ Campbell  
Classic Creations Jewellers  
Anonymous  
Loblaw Inc.  
Madeline's Boutique  
Patricia Scott  
Winberg Foundation

## \$10,000 - \$24,999

Bluenotes\*  
Ron Bolt  
Burt's Bees® Canada  
The Carlu

East York Rotary Club  
Elite Island Resorts  
Fraas The Scarf Company  
Giftagram  
The Gown Bridal Shop  
Loch Gallery  
Sylvain Louis-Seize\*  
The Printing House  
Queen Charlotte Lodge  
Malcolm Rains  
Schulz Beauty  
Smashbox Cosmetics  
Toronto Life Magazine  
Weavers Art\*

\*Foundation supporters 10+ years.



Philanthropic Leaders: CAF Board of Directors 2015-2016



# ENDOWMENT FUNDS

We are grateful to our donors who have chosen to build a lasting and generous legacy by establishing an endowment fund at the Children's Aid Foundation. Endowed funds may be established at the Children's Aid Foundation with a minimum gift of \$100,000.

The Block Family Scholarship Fund  
Joe Carter Family Support Fund  
Joe Carter Scholarship Fund  
Jack Darville Scholarship Fund  
de Verteuil-Glover Family Scholarship Fund  
Drynan Family Scholarship Fund  
Element Fleet Management Scholarship Fund  
Evans Family Fund  
Exshaw Family Scholarship Fund  
Factor - Inwentash Family Scholarship Fund  
Falconer Family Scholarship Fund  
Charles and Tristan Falk Scholarship Fund  
Gibb Capital Endowment Fund  
Gibson Family Scholarship Fund  
GL Scholarship Fund  
Gluckstein-Sarantopoulos Family Scholarship Fund  
The Grammie Project  
Rosalie Hall Fund  
Margaret Hincks Ambassador School Fund  
Margaret Hincks Scholarship Fund  
Margaret Hincks Tutoring Fund  
Hoffmann-La Roche Scholarship Fund  
Ivari Scholarship Fund  
Sheilagh and Peter Johnson Scholarship Fund  
Keg Spirit Foundation Post-Secondary Education Scholarship Fund  
Gordon Kirke Scholarship Fund  
Leith Family Scholarship Fund  
Manulife Scholarship Fund  
Janet McDonald Memorial Scholarship Fund  
Dawn McDowell Memorial Scholarship Fund  
Milne Family Scholarship Fund

Oriole Scholarship Fund  
Ovens Family Teddy Bear Endowment Fund  
Rose M. Patten and Thomas Di Giacomo Scholarship Fund  
James D. Patterson Scholarship Fund  
Cookie and Stephen Sandler Scholarship Fund  
Sandys Family Scholarship Fund  
Amanda and John Sherrington Scholarship Fund  
Susan Storey Miracle Fund  
Susan Storey Scholarship Fund  
Dr. Paul Steinhauer Memorial Scholarship Fund  
Christopher Stringer Scholarship Fund  
Olivia Thompson Scholarship Fund

## ESTATE DONORS

The Children's Aid Foundation wishes to honour the memory of those friends who remembered the Children's Aid Foundation in their estate plans and whose bequests were realized during the 2015-2016 year.

Estate of Gertrude Helperin  
Estate of Francesca Mastrella  
Estate of George F. Siddorn

## GUARDIANS OF HOPE

The Guardians of Hope giving club recognizes and honours donors who have thoughtfully made a provision for the Foundation through a future bequest or any other planned giving vehicle.

Donna L. Brown  
Marilyn Croghan  
Kevin J. and Cheryl Drynan  
Anonymous  
Anonymous  
James D. and Judy Patterson  
Cathy and Surge Ramsamujh  
Stephen L. and Cookie Sandler  
Christopher and Geraldine Stringer

## COMMUNITY PARTNERS AND EVENTS

We are pleased to have the opportunity to work with so many dedicated individuals and organizations who run community and partnership events or fundraising activities in support of the Children's Aid Foundation.

### Partnership Events

Joe Carter Classic  
The Corsage Project  
Lindt & Sprüngli (Canada), Inc.

### Community Partners

EchoAge  
Funspiel  
Imaginus  
Newzapalooza  
Manulife Centre  
Pardons Canada  
Scotiabank Charity Challenge  
Sam Shuter  
Waterloo Wood Gundy  
(Surprise Movie Night)  
Wonderland Event

# BOARDS & COMMITTEES

## 2015-2016 CHILDREN'S AID FOUNDATION BOARD OF DIRECTORS

### Lynn Factor, O.Ont, MSW, RSW, LLD

Chair of the Board of Directors,  
Children's Aid Foundation  
Child Witness Advocate, Boost Child  
Abuse Prevention and Intervention

### Joseph C. Canavan

Past Chair of the Board of Directors,  
Children's Aid Foundation  
Founder, Canavan Capital

### William Blair

Member of Parliament,  
Scarborough Southwest

### Laura Dottori-Attanasio

Senior Executive Vice  
President & CRO, CIBC

### Andrew W. Dunn, FCPA

Founder & Managing Partner,  
Canadian Shield Capital

### Amoryn Engel

Society Editor, National Post

### Charyl Galpin, FICB, ICD.D

Executive Vice President & Managing  
Director Head, Private Client  
Division, BMO Nesbitt Burns

### Brian Gluckstein

Principal Interior Designer,  
Gluckstein Design

### Jason Henderson

Executive Vice President, Head of Global  
Banking and Markets, HSBC Bank Canada

### Barry Hildred

Principal, Level 2 Advisors Inc.

### Shannon McGinnis

Senior Vice President, Marketing,  
Customer Knowledge, Strategy &  
Experience, TD Bank Group

### Brian Mergelas, PhD

CEO, Sunwell Technologies Inc.

### Victoria Pelletier

Vice President, Client  
Management, AON Hewitt

### Jenny Poulos

Senior Vice President, Personal  
and Commercial Banking Human  
Resources & RBC Recruitment,  
RBC Royal Bank of Canada

### Gordon Raman

Partner, Borden Ladner Gervais LLP

### Jan Sampson

Vice President, Sales &  
Marketing, CI Investments

### Donna E. Toth

Managing Director, Global Equity  
Sales, Scotiabank GBM

### Terry Walsh

President & Managing Partner,  
Gryphon Investment Counsel Inc.

## CAMPAIGN LEADERSHIP COUNCIL

### Chair

Laura Dottori-Attanasio

Ted Boyd

William E. Butt

Scott Burrows

Joseph C. Canavan

Mark Daniels & Andrea

Weissman-Daniels

Andrew W. Dunn

Christian Exshaw

Lynn Factor

Richard D. Falconer

Brian Gluckstein

Jason Henderson

Dougal Macdonald

Peter Rawlins

Bonnie Shore

Donna E. Toth

## YOUNG PEOPLE'S ADVISORY COUNCIL 2015-2016

Michele Farrugia

Jemmy Felix

Kristy Graves

Crystal Groves

Wendy Hayes

Shyanne Nichols

Shameer Rahman

Maya Ramchandani

Cheyenne Ratnam

Melissa Sayers

Jemal Thompson

## HONORARY COUNCIL 2015-2016

Sheila R. Block

Peter H. Lee

David Leith

Noella Milne

John Sherrington

Susan Storey

## 2015 SCHOLARSHIP AWARD COMMITTEE

Lynn Factor (Chair)

Carina Chan

Sylvia Baumann

Brian Gluckstein

Barry Hildred

Marie MacDonald

Shannon McGinnis

Brian Mergelas

Myles Mindham

Victoria Pelletier

Julie Peyaut

Gordon Raman

Ilona Torontali

## ROUND TABLES

Youth Transitioning Working Group  
Building Partnerships for Permanency

## COMMUNICATION PREFERENCES

Every effort has been made to ensure the accuracy of this list. If an error has been made please accept our sincerest apologies and contact us so that we can update your information.

Let us know if we can assist you with the following:

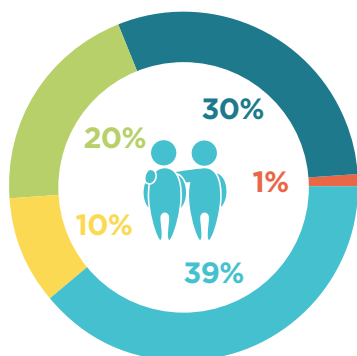
1. Obtaining this annual publication electronically or want more information about how to make a gift to the Children's Aid Foundation
2. Updating your name for the purpose of recognition, or have questions about the Children's Aid Foundation donor listing
3. Updating your general communication preferences

Please contact Angie Docking, Development Officer, Stewardship at **adocking@cafdn.org** or call **(416) 923-0924 x230**.

At the Children's Aid Foundation, we are committed to protecting your personal information. The information we collect is used to keep our donors, volunteers and friends informed about our programs and services, and to ask for your financial support. At any time, you have the right to request that your personal information cease to be used and/ or for fundraising purposes. For the complete notice of your protection and privacy and the Donor Bill of Rights, please visit: **cafdn.org/accountability**.

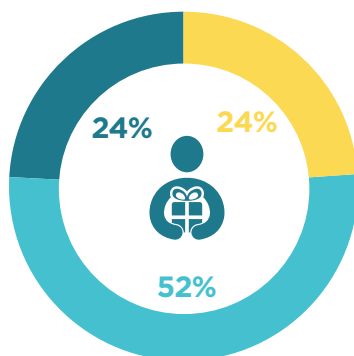
# FINANCIAL HIGHLIGHTS

## AREAS OF SUPPORT



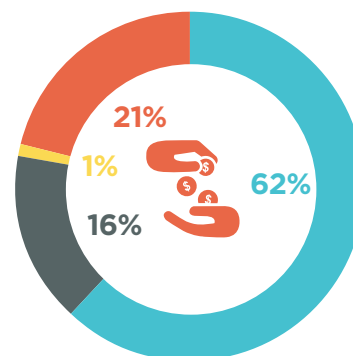
EDUCATION  
ENRICHMENT  
PREVENTION  
HEALING & RECOVERY  
OTHER

## WHO ARE OUR DONORS



INDIVIDUALS  
FOUNDATIONS  
CORPORATIONS

## FUNDRAISING PROGRAM



MAJOR GIFTS  
COMMUNITY GIVING  
PLANNED GIVING  
SIGNATURE EVENTS

## YEAR ENDED MARCH 31, 2016

## 2016(11 MONTHS)<sup>†</sup>

## 2015

Fundraising Revenue	\$8,571,550	\$8,341,420
Net Investment Income <sup>‡</sup>	\$(354,673)	\$3,417,728
Gain on Sale of Property	\$3,062,000	\$-
Rental Income	\$397,090	\$449,832

<b>Total</b>	<b>\$11,675,967</b>	<b>\$12,208,980</b>
--------------	---------------------	---------------------

Grants and Programs	\$8,643,739	\$7,060,069
---------------------	-------------	-------------

Fundraising Expenses	\$985,406	\$1,230,835
Administrative Expenses	\$1,046,618	\$1,051,135
Advocacy	\$351,624	\$334,226

<b>Total</b>	<b>\$2,383,648</b>	<b>\$2,616,196</b>
--------------	--------------------	--------------------

Excess of revenue over grants and expenses	\$648,580	\$2,532,715
--------------------------------------------	-----------	-------------

<sup>†</sup> The Foundation has adopted a March 31 year-end so the 2016 numbers reflect an 11-month year.

<sup>‡</sup> Investment income includes unrealized gains on investments.

Audited financial statements may be obtained online at [cafdn.org](http://cafdn.org)

Charitable registration number 108076480RR0001



Christina, former youth in care

**By investing  
in Canada's  
young people who  
have experienced abuse  
and neglect, we can remove  
barriers and allow them to achieve  
their full potential. Your support is  
truly making a transformative difference,  
and allowing us to illuminate even more young  
lives from coast to coast.**



**CHILDREN'S  
AID FOUNDATION**  
Strength to change lives.

25 Spadina Road  
Toronto, ON, M5R 2S9  
416-923-0924  
[cafdn.org](http://cafdn.org)

Charitable registration number  
108076480RR0001